

# SECTION 11

## Team Quest

### 90. Age Categories for Teams

There are two age categories:

- **Under 18 Team** – all riders up to the end of the year of their **18th birthday**.
- **Open Team** – riders of any age.

### 91. Membership

All team members must have a minimum of a Quest/BYRDS Club membership (or any other paid category of BD membership). All horses must have a minimum of a FREE associate horse registration.

### 92. Team Composition

- Teams can be made of a minimum of three and maximum of four different riders.
- Teams must register their team name and its members with British Dressage. The name chosen must not have been used before. Each team must nominate a Team Captain who will be the point of contact for the team. Each team must nominate which region they are competing for and if a team wishes to change regions they must do so within two months of the team first competing in a new Quest season by applying to the BD office.
- Additional reserve riders/horses can be registered to a team up to a maximum of seven riders with unlimited horses. If the composition of the team changes (e.g. a rider or horse drops out), changes to the team must be registered with BD by the day of the qualifying competition.
- All teams must be made up of a unique combination of members; i.e. no two teams may have the exact same composition at any time.
- A team may only be represented once per competition day. i.e. a team may not compete at two different competitions on the same day.
- Horses/ponies can be ridden twice on the same team if ridden by two different riders. A horse/pony cannot compete in more than two tests per competition day. A rider may not ride more than once for a team (i.e. one rider with two horses).
- A combination may compete for a team only once per Team Quest competition day. If a combination competes for a second team they must ride at a different level and must specify this to the organiser when making their entry.
- If My Quest classes are offered by organisers Team Quest competitors may compete in these classes but they won't count towards Team Quest scores.
- Teams can be made up of riders competing in any level of test (i.e. a team of four Intro riders or four Novice riders, or any combination of each of the levels available).

### 93. Eligibility to compete

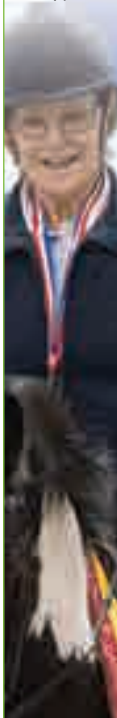
- Team Quest is a BD governed competition and as such will run according to BD rules and regulations including horse welfare and any veterinary regulations.



- b) A minimum of three combinations must ride down the centre line in order for the team receive ranking points. This excludes combinations who have been eliminated from the competition whose score may not be used towards a team's final score.
- c) Group E Para riders may ride at any level in Team Quest competitions regardless of horse or rider points. Group D Para riders may ride at Preliminary and Novice regardless of horse or rider points.
- d) Riders can choose which level they ride at, providing that all combinations are eligible for the Bronze section at Introductory, Preliminary, and Novice respectively in accordance with BD rules; the table below shows which levels horses and rider may compete in.

	Rider	Horse	Horse and rider combination
<b>Introductory Bronze No Championship</b>	<p>A rider is eligible unless they -</p> <ul style="list-style-type: none"> <li>Have won points at Novice level or above on any horse.</li> <li>Have scored 65% or higher at an Area Festival at Prelim level or competed at an Area Festival at Novice or above on any horse.</li> <li>Have competed at Regional/Music/Winter/National Championships at Preliminary level or above or at PSG and above at a Premier League/CDI.</li> <li>Have competed in the Semi-Final of the Young Horse Championship in any age group.</li> </ul>	<p>A horse is eligible unless it -</p> <ul style="list-style-type: none"> <li>Has won more than 15 points at Novice level or any points at Elementary or above with any rider.</li> <li>Has competed at Music/Winter/National Championships at Novice level or levels above or at PSG and above at a Premier League/CDI with any rider.</li> <li>Have competed in the Final of the Young Horse Championship in any age group.</li> </ul>	<p>A combination is eligible unless they -</p> <ul style="list-style-type: none"> <li>Have competed at Regional/Music/Winter/National Championship at Preliminary level or above or at PSG and above at a Premier League/CDI.</li> </ul>
<b>Other applicable criteria</b>			
Once a combination has scored 65% or higher at Prelim level or levels above Prelim they may not compete at intro level.			

	Rider	Horse	Horse and rider combination
<b>Preliminary Bronze Qualifies for Area Festivals only</b>	<p>A rider is eligible unless they -</p> <ul style="list-style-type: none"> <li>Have won more than 15 points at Novice level or any points at Elementary or above on any horse.</li> <li>Have scored 65% or higher at an Area Festival or Regional at Novice level or competed at an Area Festival or Regional at Elementary or above on any horse.</li> <li>Have competed at Music/Winter/National Championships at Preliminary level or above or at PSG and above at a Premier League/CDI.</li> <li>Have competed in the Semi-Final of the Young Horse Championship in any age group.</li> </ul>	<p>A horse is eligible unless it -</p> <ul style="list-style-type: none"> <li>Has won more than 15 points at Elementary level or any points at Medium or above with any rider.</li> <li>Has competed at Music/Winter/National Championships at Novice level or levels above or at PSG and above at a Premier League/CDI with any rider.</li> <li>Have competed in the Final of the Young Horse Championship in any age group.</li> </ul>	<p>A combination is eligible unless they -</p> <ul style="list-style-type: none"> <li>Have competed at Regional (non-music classes)/ Winter/Music/ National Championships at Preliminary level or above or in an FEI class at Premier League/CDI.</li> <li>Have scored 65% or higher at a Music Regional Championship at Novice or competed at Elementary or above in a Music Regional.</li> </ul>
<b>Other applicable criteria</b>			
Combinations placed in the top three of the Bronze Area Festival Championship may not compete in Bronze sections at Preliminary or below in future years.			



	Rider	Horse	Horse and rider combination
<b>Novice Bronze Qualifies for Area Festivals only</b>	<p>A rider is eligible unless they -</p> <ul style="list-style-type: none"> <li>Have won more than 15 points at Elementary level or any points at Medium or above on any horse.</li> <li>Have scored 65% or higher at an Area Festival or Regional at Elementary level or competed at an Area Festival or Regional at Medium or above on any horse.</li> <li>Have competed at Music/Winter/National Championships at Novice level or above or at PSG and above at a Premier League/CDI.</li> <li>Have competed in the 5 or 6 year old Semi-Final of the Young Horse Championship.</li> </ul>	<p>A horse is eligible unless it -</p> <ul style="list-style-type: none"> <li>Has won more than 15 points at Medium level or any points at Advanced Medium or above with any rider.</li> <li>Has competed at Music/Winter/National Championships at Elementary or levels above or at PSG and above at a Premier League/CDI with any rider.</li> <li>Have competed in the 5 or 6 year old Final of the Young Horse Championship.</li> </ul>	<p>A combination is eligible unless they -</p> <ul style="list-style-type: none"> <li>Have competed at Regional (non-music classes)/ Winter/Music/ National Championships at Novice or any levels above or at PSG and above at a Premier League/CDI.</li> <li>Have scored 65% or higher at a Music Regional Championship at Novice or competed at Elementary or above in a Music Regional.</li> </ul>
<b>Other applicable criteria</b>			
Combinations placed in the top three of the Bronze Area Festival Championship at Novice or above may not compete in Bronze sections at Novice level in future years.			

- e) Combinations starting the Team Quest competition season within the points limits specified above who subsequently upgrade during the Team Quest season will remain eligible to compete at the Team Quest Regional and National Finals, but will no longer be permitted to compete in the regular Team Quest qualifying classes at that level. Except for rule 89 f) below.
- f) Should a team composition change due to horse/rider eligibility the team must be recomposed to include combinations that are eligible.
- g) Riders who during the Team Quest season upgrade to a rider group higher than 5 will no longer be eligible to compete at any Team Quest competition (including finals).
- h) Horses and ponies of any height are eligible for all levels/team categories but must be 4 years old or over.
- i) BD points will not be allocated for any Team Quest competition, including Regional and National Team Quest finals.
- j) A team can compete in any TQ competition in any region, but their points based on the placing at the competition will be allocated to the team's regional leader board.
- k) A combination competing at Introductory level that achieves 70% or more in two Team Quest competitions must move up to a higher level, excluding riders under the age of 12 (to the end of the year of their **12th** birthday) and para riders in grades I and II.
- l) A combination competing at Preliminary level that achieves 70% or more in three Team Quest competitions must move up to a higher level, excluding riders under the age of **12** (to the end of the year of their **12th** birthday).
- m) Once a combination has ridden at a higher level in Team Quest competitions and achieved 70% or more they may not go back and compete at a lower level; (including Regionals and Championships) e.g. a combination that has achieved 71% at Prelim may not compete at Intro in further competitions.
- n) 70%+ scores from all previous Quest seasons count towards moving a combination up a level.

- o) If a combination's last Team Quest qualifier competition before the regionals is the 70%+ score that triggers them up a level, the combination may stay at that level for the regional and/or nationals if qualified.
- p) All riders and horses who take part in the Team Quest Regional and National Finals must have taken part in at least one qualifying competition for that team in the qualification period.

#### 94. Qualifying Period

Team Quest Qualifying competitions to take place from **1 December of the previous year** to 31 August.

Eight Regional Finals to take place in September/October.

The National Final to take place in November.

#### 95. Regional Rankings and Regional Finals

Each of the eight BD regions will have its own Team Quest leader board. Teams can compete in any Team Quest competition in any region, but their points based on their placing at the competition will be allocated to the team's regional leader board. Points at each competition will be allocated according to team placings, as below. Teams lower than 10th place will not receive any points.

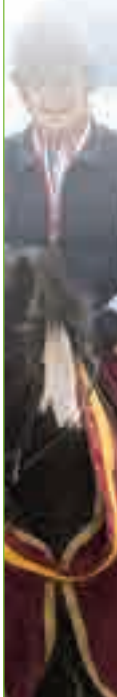
Points at each competition will be allocated according to team placings, as follows:

Team Placing	Points
1 <sup>st</sup>	10
2 <sup>nd</sup>	9
3 <sup>rd</sup>	8
4 <sup>th</sup>	7
5 <sup>th</sup>	6
6 <sup>th</sup>	5
7 <sup>th</sup>	4
8 <sup>th</sup>	3
9 <sup>th</sup>	2
10 <sup>th</sup>	1

Teams lower than 10th place will not receive any points.

The regional rankings are based on points and will only take into account the five best placings for each team. In the event of a tie of points where both teams have competed five times or more, regardless of the amount of competitions they have competed at, a tie will be split by calculating the total team percentages achieved at each of the team's top five placings.

If there is still a tie, the sixth best placing and score for each team will determine which team takes the lead. If a tie still remains, the seventh, eighth, etc best placing and score will determine the team placing until the tie is broken.



In case of equality of points before five results have been achieved, points accumulated over fewer events will determine a higher placing than points gained over more events. For example, a team earning 30 points in three competitions will go ahead of a team that has earned 30 points across five competitions. If there is still equality of placing, a tie will be split by calculating the total team percentages achieved at each of the team's placings. The higher total of such percentages will take the lead.

At the end of the qualifying period a Regional Final will be held in each of the eight regions. The top fifteen teams from each section (**Under 18 & Open**) within the region will qualify for the respective Regional Final. Teams must compete in the Regional Final within the region which they have nominated to ride in.

#### 96. Qualification for the National Final

Teams from each section (**Under 18 & Open**) from each of the eight regional finals will qualify for the Team Quest National Final on a ratio based on the number of teams competing in that region.

Number of teams on regional leaderboard	Number of teams to qualify for National Championships from that region
Up to 5 teams	1 qualifying place
6 – 10 teams	2 qualifying places
11 teams or more	3 qualifying places

Available qualification places will be awarded as wildcards to the highest scoring teams from all regional finals who are yet to qualify in that section. If a team is unable to attend the final the place will be allocated to the next placed team from the same region.

#### 97. Dressage tests

Tests will be run in short or long arenas. Organisers can choose any of the tests in current use for the level. Each competition will hold one test from each level.

#### 98. Saddlery and dress

- a) BD rules will apply with regards to saddlery and horse equipment. Numnahs/saddle cloths may be of any colour.
- b) BD rider dress rules are relaxed for Team Quest. Safety is paramount, so protective headgear must be worn, in accordance with BD rules.
- c) Jackets are not compulsory. Teams are encouraged to wear smart casual 'team colours' of their choice, excluding fancy dress.
- d) Footwear needs to be safe (i.e. a small heel and clearance each side of the stirrup) and may be long or short boots, with or without gaiters. Breeches/Jodhpurs can be of any colour.
- e) Horses may be plaited; however, it is not compulsory, and may not be decorated other than via permitted tack (e.g. diamante or coloured browbands).
- f) Boots and bandages are not permitted during the test, in accordance with BD rules.
- g) Commanders and whips will be allowed at all levels and in the Regional and National Finals.



# Get out there & compete!

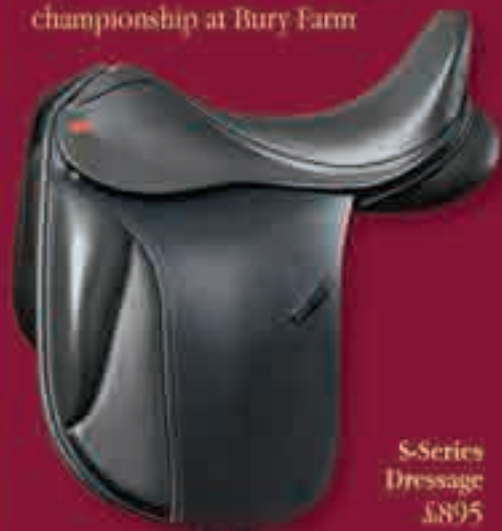
Get together with your friends and take part in our nationwide series of entry-level dressage classes

## *Kent & Masters* Team Quest



2015 Winner: Erika Abbots & Lemjolen Domingo,  
member of the winning Open team -  
The Ecclestone Altons

Teams of 3 or 4 compete at any level from British Dressage Intro to Elementary. Qualification through regional finals leads to a major championship at Bury Farm



S-Series  
Dressage  
£895



For all the information you need to find a venue near you and get your competition journey underway visit

# kentandmasters.co.uk

# SECTION 12

## My Quest

### 99. Age Categories

There are two age categories:

- Under 18 – all riders up to the end of the year of their 18th birthday.
- Open – riders in the year of their 26th birthday and older.

### 100. Membership

All riders must have a minimum of a Quest/BYRDS Club membership (or any other paid category of BD membership).

All horses must have a minimum of a FREE associate horse registration.

Upon registration members will be allocated a region based on their postcode. Members living on the border of two regions may elect to move to another region. This must be done within two months after competing in their first My Quest competition.

### 101. Eligibility to compete

- My Quest is a BD governed competition and as such will run according to BD rules and regulations including horse welfare and any veterinary regulations.
- Riders can choose which level they ride at, providing that as a combination they are eligible for the Bronze section at Introductory, Preliminary or Novice Bronze respectively in accordance with BD rules; the table below shows which levels horses and rider may compete in.
- Group E Para riders may ride at any level in My Quest competitions regardless of horse or rider points. Group D Para riders may ride at Preliminary and Novice regardless of horse or rider points.

	Rider	Horse	Horse and rider combination
<b>Introductory Bronze No Championship</b>	<p>A rider is eligible unless they -</p> <ul style="list-style-type: none"><li>Have won points at Novice level or above on any horse.</li><li>Have scored 65% or higher at an Area Festival at Prelim level or competed at an Area Festival at Novice or above on any horse.</li><li>Have competed at Regional/Music/Winter/National Championships at Preliminary level or above or at PSG and above at a Premier League/CDI.</li><li>Have competed in the Semi-Final of the Young Horse Championship in any age group.</li></ul>	<p>A horse is eligible unless it -</p> <ul style="list-style-type: none"><li>Has won more than 15 points at Novice level or any points at Elementary or above with any rider.</li><li>Has competed at Music/Winter/National Championships at Novice level or levels above or at PSG and above at a Premier League/CDI with any rider.</li><li>Has competed in the Final of the Young Horse Championship in any age group.</li></ul>	<p>A combination is eligible unless they -</p> <ul style="list-style-type: none"><li>Have competed at Regional/Music/Winter/National Championship at Preliminary level or above or at PSG and above at a Premier League/CDI.</li></ul>
<b>Other applicable criteria</b>			
Once a combination has scored 65% or higher at Prelim level or levels above Prelim they may not compete at intro level.			

	Rider	Horse	Horse and rider combination
<b>Preliminary Bronze</b>  <b>Qualifies for Area Festivals only</b>	A rider is eligible unless they - Have won more than 15 points at Novice level or any points at Elementary or above on any horse. Have scored 65% or higher at an Area Festival or Regional at Novice level or competed at an Area Festival or Regional at Elementary or above on any horse. Have competed at Music/Winter/National Championships at Preliminary level or above or at PSG and above at a Premier League/CDI. Have competed in the Semi-Final of the Young Horse Championship in any age group.	A horse is eligible unless it - Has won more than 15 points at Elementary level or any points at Medium or above with any rider. Has competed at Music/Winter/National Championships at Novice level or levels above or at PSG and above at a Premier League/CDI with any rider. Have competed in the Final of the Young Horse Championship in any age group.	A combination is eligible unless they - Have competed at Regional (non-music classes)/ Winter/Music/ National Championships at Preliminary level or above or in an FEI class at Premier League/CDI. Have scored 65% or higher at a Music Regional Championship at Novice or competed at Elementary or above in a Music Regional.

**Other applicable criteria**

Combinations placed in the top three of the Bronze Area Festival Championship may not compete in Bronze sections at Preliminary or below in future years.

	Rider	Horse	Horse and rider combination
<b>Novice Bronze</b>  <b>Qualifies for Area Festivals only</b>	A rider is eligible unless they - Have won more than 15 points at Elementary level or any points at Medium or above on any horse. Have scored 65% or higher at an Area Festival or Regional at Elementary level or competed at an Area Festival or Regional at Medium or above on any horse. Have competed at Music/Winter/National Championships at Novice level or above or at PSG and above at a Premier League/CDI. Have competed in the 5 or 6 year old Semi-Final of the Young Horse Championship.	A horse is eligible unless it - Has won more than 15 points at Medium level or any points at Advanced Medium or above with any rider. Has competed at Music/Winter/National Championships at Elementary or levels above or at PSG and above at a Premier League/CDI with any rider. Have competed in the 5 or 6 year old Final of the Young Horse Championship.	A combination is eligible unless they - Have competed at Regional (non-music classes)/ Winter/Music/ National Championships at Novice or any levels above or at PSG and above at a Premier League/CDI. Have scored 65% or higher at a Music Regional Championship at Novice or competed at Elementary or above in a Music Regional.

**Other applicable criteria**

Combinations placed in the top three of the Bronze Area Festival Championship at Novice or above may not compete in Bronze sections at Novice level in future years.

- d) Combinations starting out the My Quest competition season within the points limits specified above who subsequently upgrade out of the points limits of the Bronze section of the level they are competing at during the My Quest season will remain eligible to compete at the My Quest Regional/National Final if qualified, however, they will no longer be permitted to compete in the regular My Quest qualifying classes at that level. Except as per restriction in g7 d) below.





- e) Riders who during the My Quest season upgrade to a rider group higher than five will no longer be eligible to compete at any My Quest competition (including the Regional and National Final).
- f) Horses and ponies of any height are eligible for all levels/team categories but must be 4 years old or over.
- g) Quest points will be allocated to My Quest competitions. These are awarded according to the percentage gained in the test to the same scale in section two of the BD Members Handbook. These points do not count towards grading and are purely a means of calculating league tables. Team Quest competition scores do not earn Quest Points.
- h) A rider can compete in any My Quest competition in any region, but their points based on the percentage at the competition will be allocated to their own regional leader board.
- i) **Combinations that were placed in the top three at the My Quest National Final may not compete at the same level in future years and must ride at a higher level in qualifying competitions.**
- j) Combinations that have achieved five scores of 70% or above in My Quest qualifying competitions (excluding Regionals) must move up to the next level the following year. Scores achieved in Team Quest do not affect eligibility for My Quest.

#### 102. Qualifying Period

My Quest Qualifying competitions to take place from **1 December of the previous year** to 31 August.

Eight Regional finals to take place in September/October.

The National Final to take place late November.

#### 103. Regional Rankings and Regional Finals

Each of the eight BD regions will have its own My Quest regional rankings. One for Open and one for **Under 18** at each level, from Introductory to Novice. Riders can compete in any My Quest competition in any region, but their Quest points, based on their percentage at the competition, will be allocated to their assigned regional leader board.

Each time a combination earns points they will be added to their overall total for that level. The regional rankings will only take into account the five best scores per horse and rider combination at a given level. At the end of the qualifying period the twenty highest ranked combinations from each section/level in each region will be invited to compete at a Regional Final.

In the event of a tie of points, the average percentage of a combination's counting scores will determine placings. If the average score remains a tie, both combinations will be invited to compete at the Regionals.

If a rider is unable to attend the final, the place will be allocated to the next rider from the same region.

If combinations qualify at multiple levels, they may only compete in two consecutive levels at regional finals and must ride in the two highest levels qualified for; e.g. a combination that qualifies at Introductory, Preliminary and Novice would have to compete in the regional final at Preliminary and Novice.



#### 104. My Quest National Final

The top four combinations from each section/level from each of the eight Regional Finals will qualify for the My Quest National Final.

If a combination is unable to attend the final, the place will be allocated to the next combination from the same region.

#### 105. Dressage tests

All tests will be run in long or short arenas. Organisers can choose any test from the list of BD tests.

Each competition will hold one test from each level.

#### 106. Saddlery and Dress

- a) BD rules will apply with regards to saddlery and horse equipment. Numnahs/saddle cloths may be of any colour.
- b) BD rider dress rules are relaxed for Team Quest. Safety is paramount, so protective headgear must be worn in accordance with BD rules.
- c) Jackets are not compulsory. Riders are encouraged to wear smart casual 'colours' of their choice, excluding fancy dress.
- d) Footwear needs to be safe (i.e. a small heel and clearance each side of the stirrup) and may be long or short boots, with or without gaiters. Breeches/Jodhpurs can be of any colour.
- e) Horses may be plaited; however, it is not compulsory, and may not be decorated other than via permitted tack (e.g. diamante or coloured browbands).
- f) Boots and bandages are not permitted during the test, in accordance with BD rules.
- g) Commanders and whips will be allowed at all levels and in the Regional and National Finals.

